



**County Health
Rankings & Roadmaps**
A Healthier Nation, County by County



Robert Wood Johnson Foundation

COUNTY HEALTH RANKINGS & ROADMAPS

Bridget Catlin, PhD

University of Wisconsin Population Health Institute

June 4, 2013



UNIVERSITY OF WISCONSIN

Population Health Institute

Translating Research for Policy and Practice



ACKNOWLEDGEMENTS

- ▶ Robert Wood Johnson Foundation
 - Including Abbey Cofsky, Brenda Henry, Michelle Larkin, Jim Marks, Joe Marx, Paul Kuehnert, Naima Wong

- ▶ Wisconsin *County Health Rankings & Roadmaps* Team
 - Including Pat Remington, Amanda Jovaag, Angela Russell, Julie Willems Van Dijk

- ▶ Our Partners
 - Including Centers for Disease Control & Prevention, Dartmouth Institute



FIND YOUR COUNTY



Learn About Data & Methods

Download Rankings Data

Find Health Rankings for Your State and County



Look up your county's *Rankings*, learn about our methods, and download the data you need.

- i Learn about the Data & Methods**
Find out what is measured and how the *Rankings* add up.
- Download the *Rankings* Data**
You can download the *Rankings* data for your state or the entire nation.

[Explore *Rankings* Data](#)

Roadmaps to Health

Improving your community's health takes work. We can help you get it done.

What Can I Learn from Others?

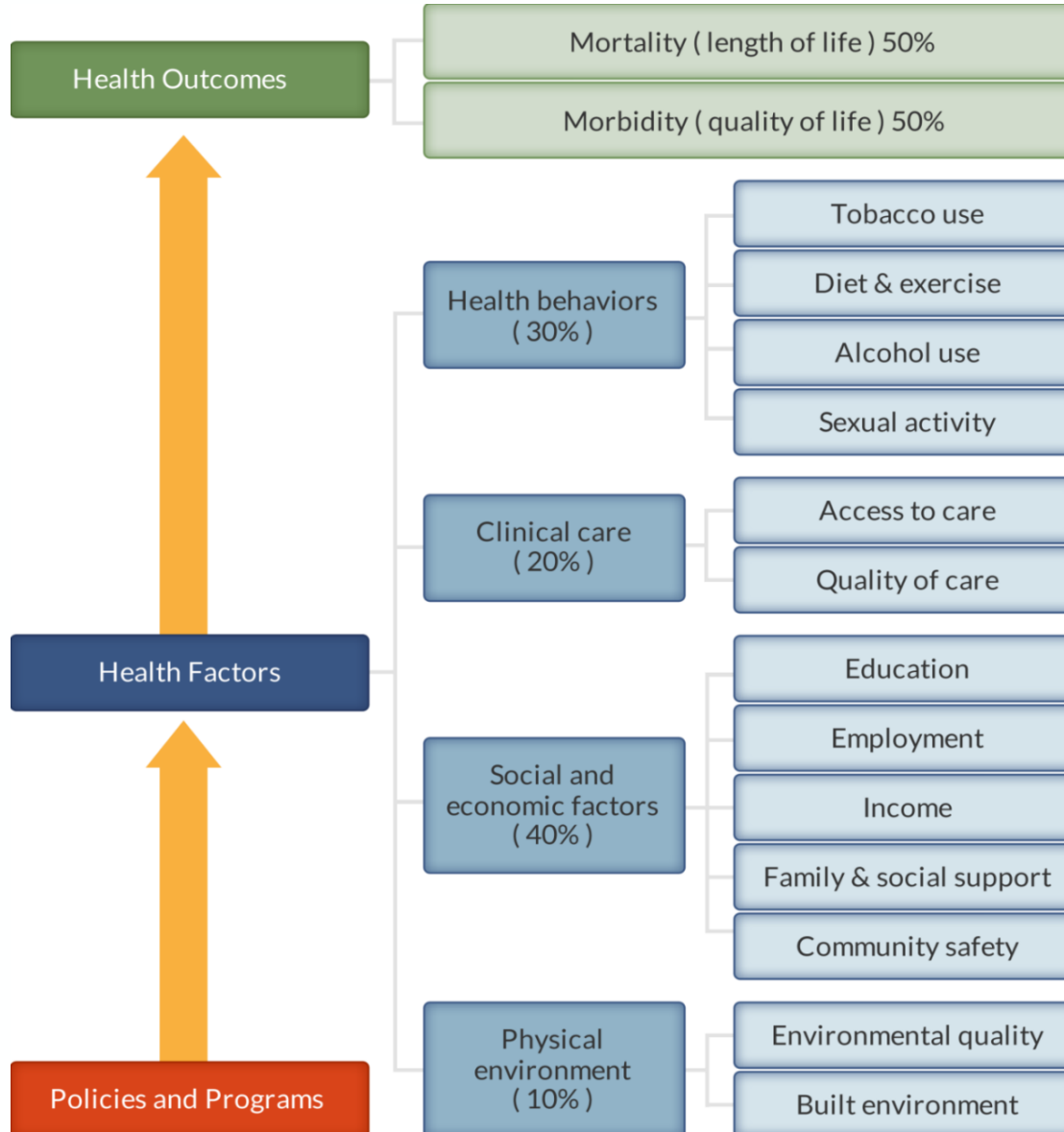
What Can I Do?



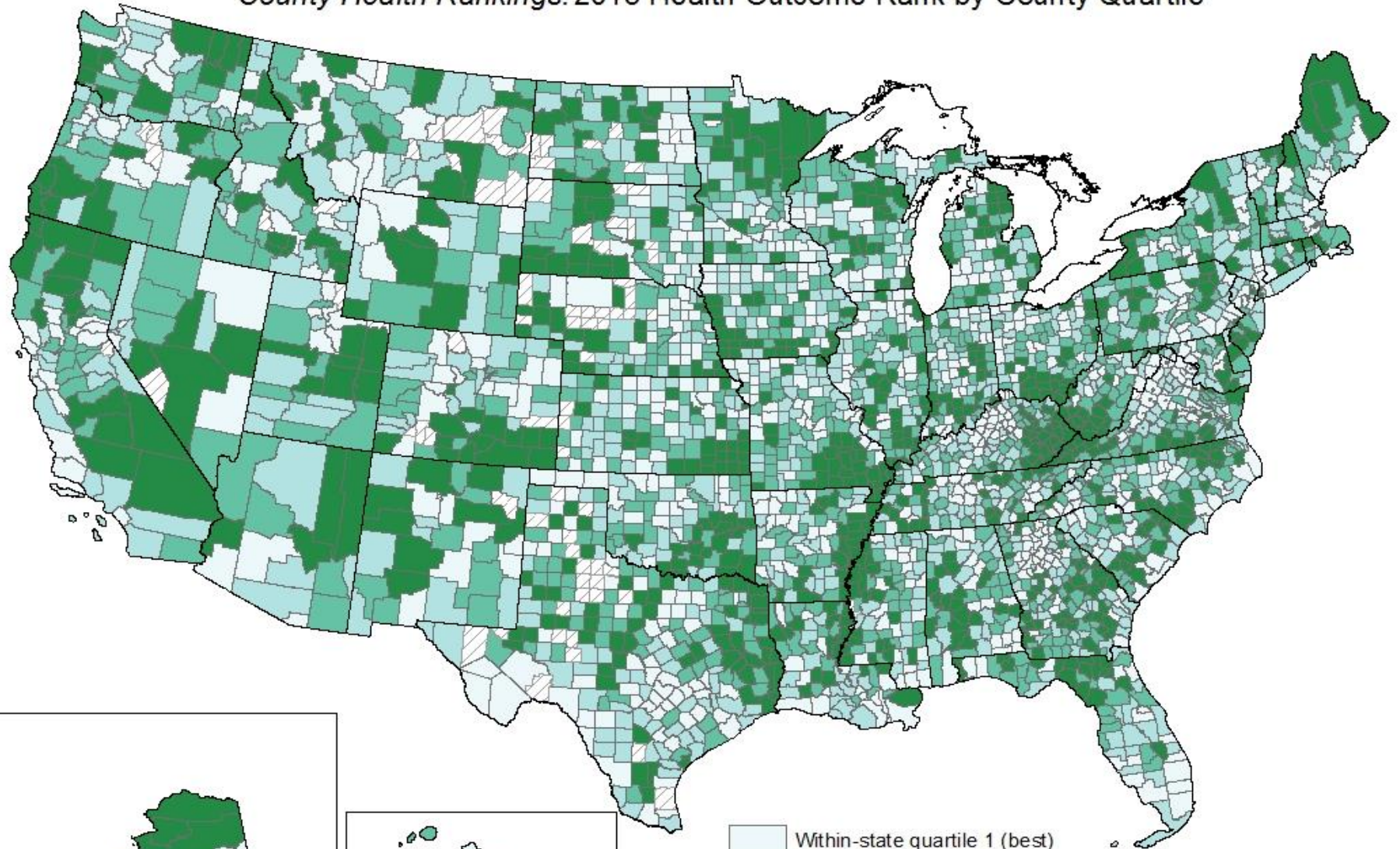


RANKINGS ARE EVERYWHERE





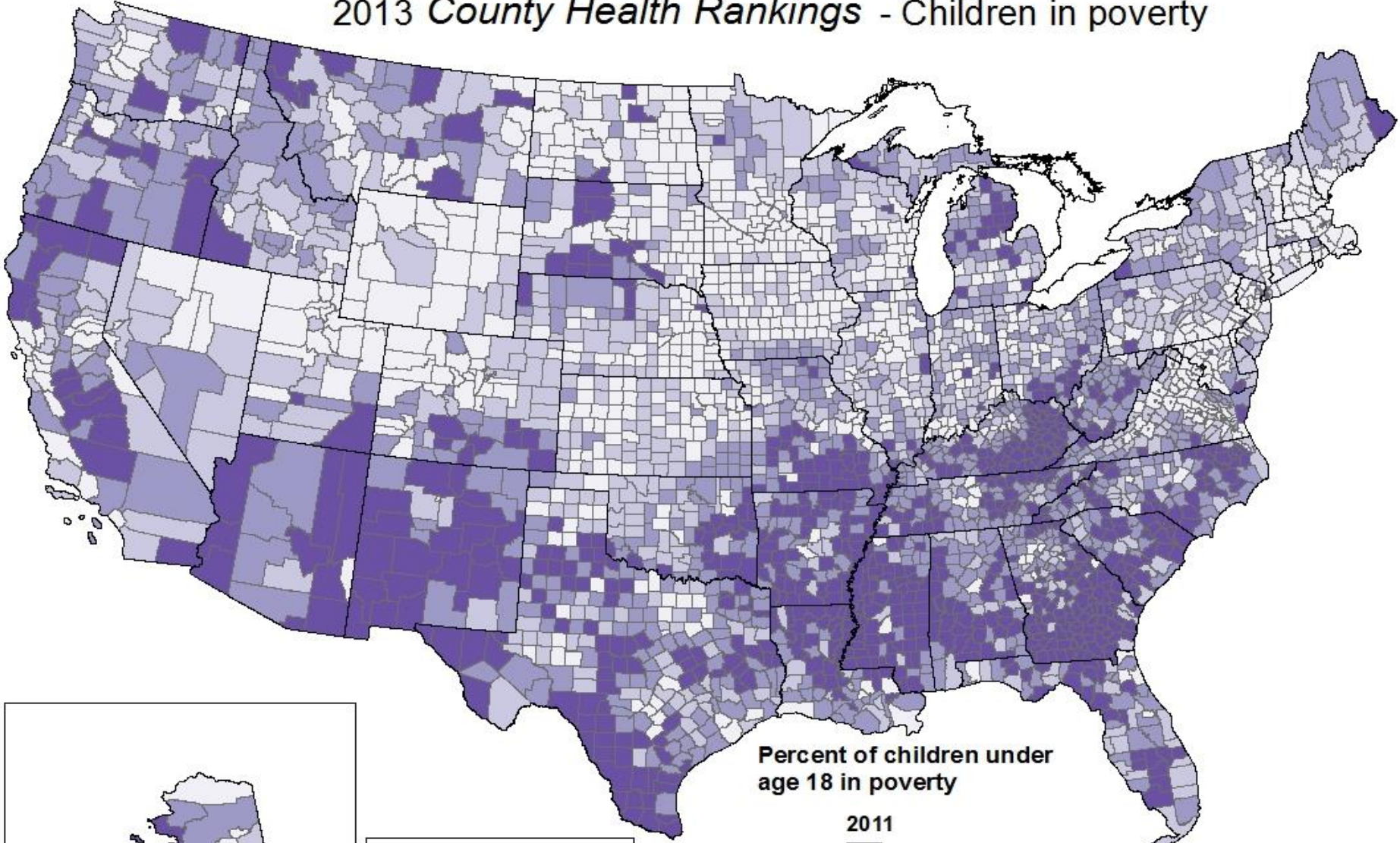
County Health Rankings: 2013 Health Outcome Rank by County Quartile*



*Counties are ranked within states and split into quartiles with equal number of counties in each quartile.

- Within-state quartile 1 (best)
- Within-state quartile 2
- Within-state quartile 3
- Within-state quartile 4 (worst)
- Unranked county

2013 County Health Rankings - Children in poverty



Percent of children under age 18 in poverty

2011

2.9 - 17.9
18.0 - 24.2
24.3 - 30.5
30.6 - 62.2
Unranked





What Can I Do?

There are many things you can do to improve health in your community. Make this your first stop after looking at your *Rankings* data. Get guidance and tools to help you work together with others to make your community a healthier place to live, learn, work and play.



Take Action

The *Roadmaps to Health* Action Center provides tools to help groups working together to create healthier places to live, learn, work and play.

[Action Center >>](#)

Learn to Use the Rankings Data

Find and use all the data on this site and beyond.

[Using the Rankings Data >>](#)

Find Policies & Programs

What Works for Health provides communities with information to help select and implement evidence-informed policies and programs.

[What Works for Health >>](#)

Need Help?

Ready to take action, but not sure what to do next?
Our team offers personalized, free help.

[Contact us for help >](#)

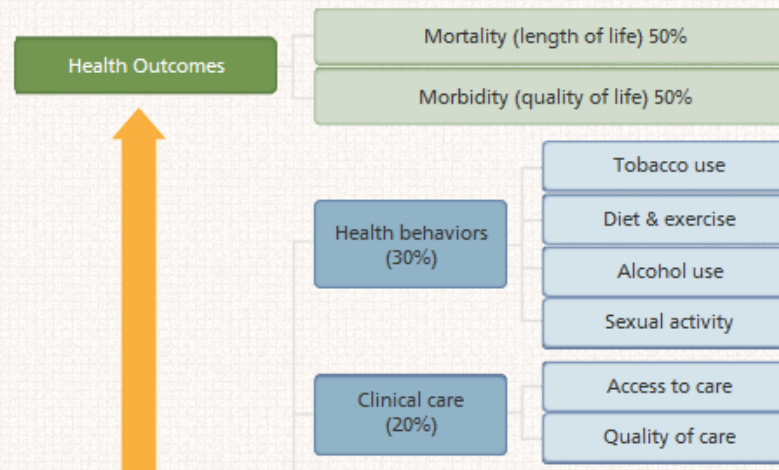


WHAT WORKS FOR HEALTH

WHAT WORKS FOR HEALTH

What Works for Health provides communities with information to help select and implement evidence-informed policies, programs, and system changes that will improve the variety of factors we know affect health.

To learn more about potential strategies, select a factor such as tobacco use or education in the model below.



www.countyhealthrankings.org/roadmaps/what-works-for-health

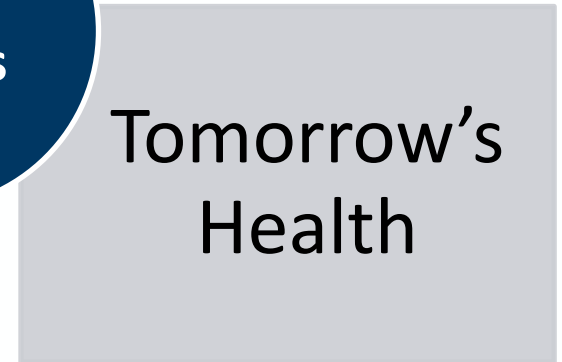
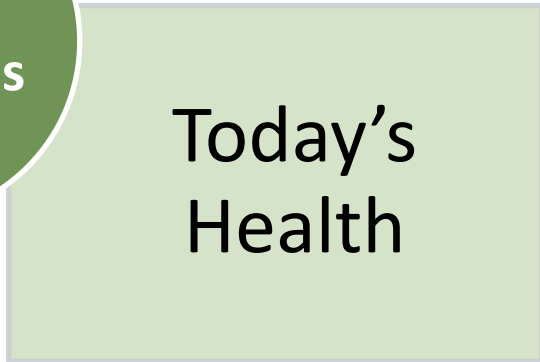


KEY POINTS

- ▶ Where we live matters to our health.
- ▶ Much of what affects our health happens outside the doctor's office.
- ▶ It's not just one thing that makes us healthy or unhealthy—it's a variety of factors.
- ▶ The impact of social and economic factors is significant.
- ▶ Collaboration is paramount.



COUNTY HEALTH RANKINGS: 2 RANKINGS





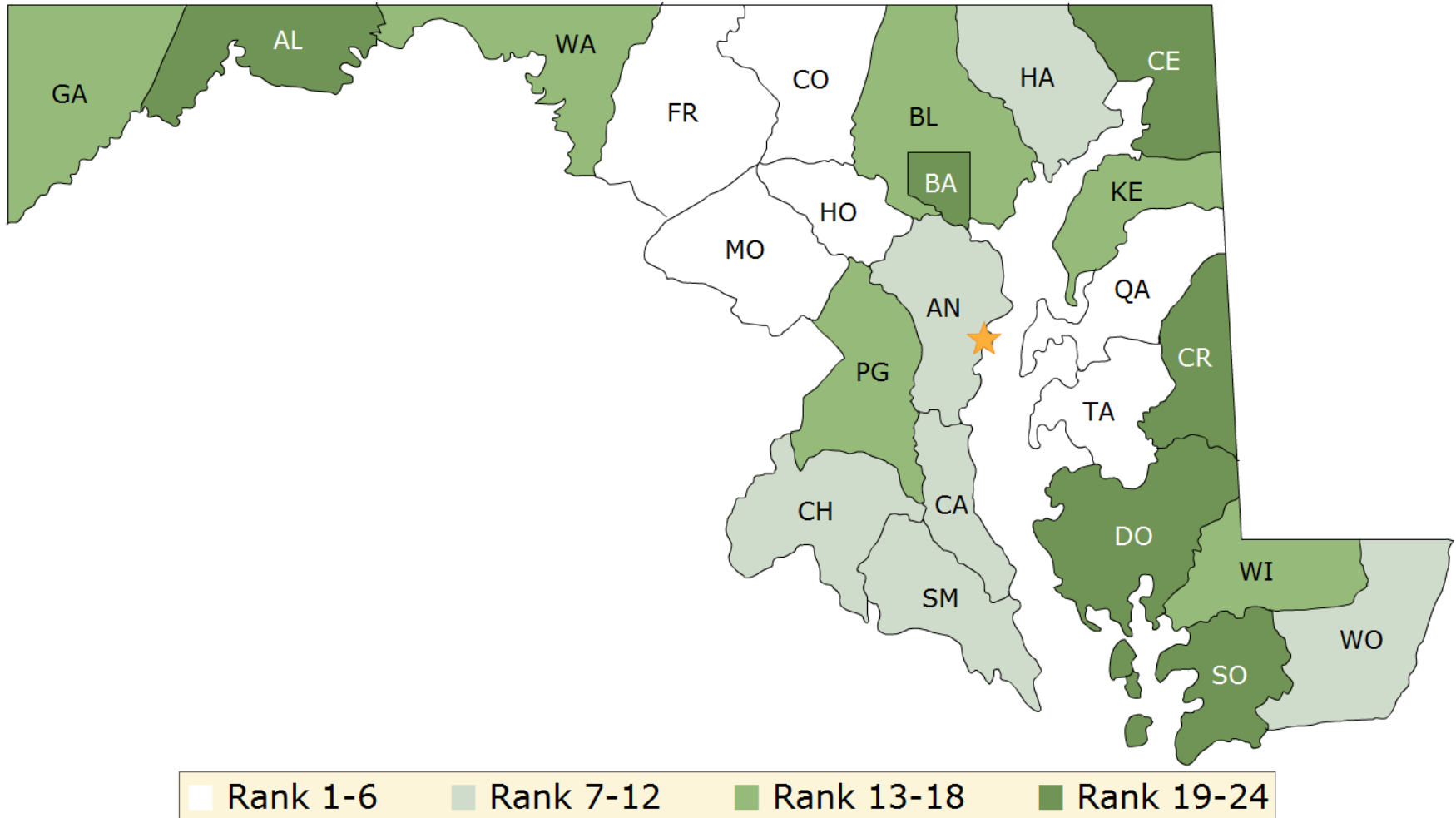
CONTACT INFO

Bridget Catlin
bcatlin@wisc.edu
608-263-1947

www.countyhealthrankings.org

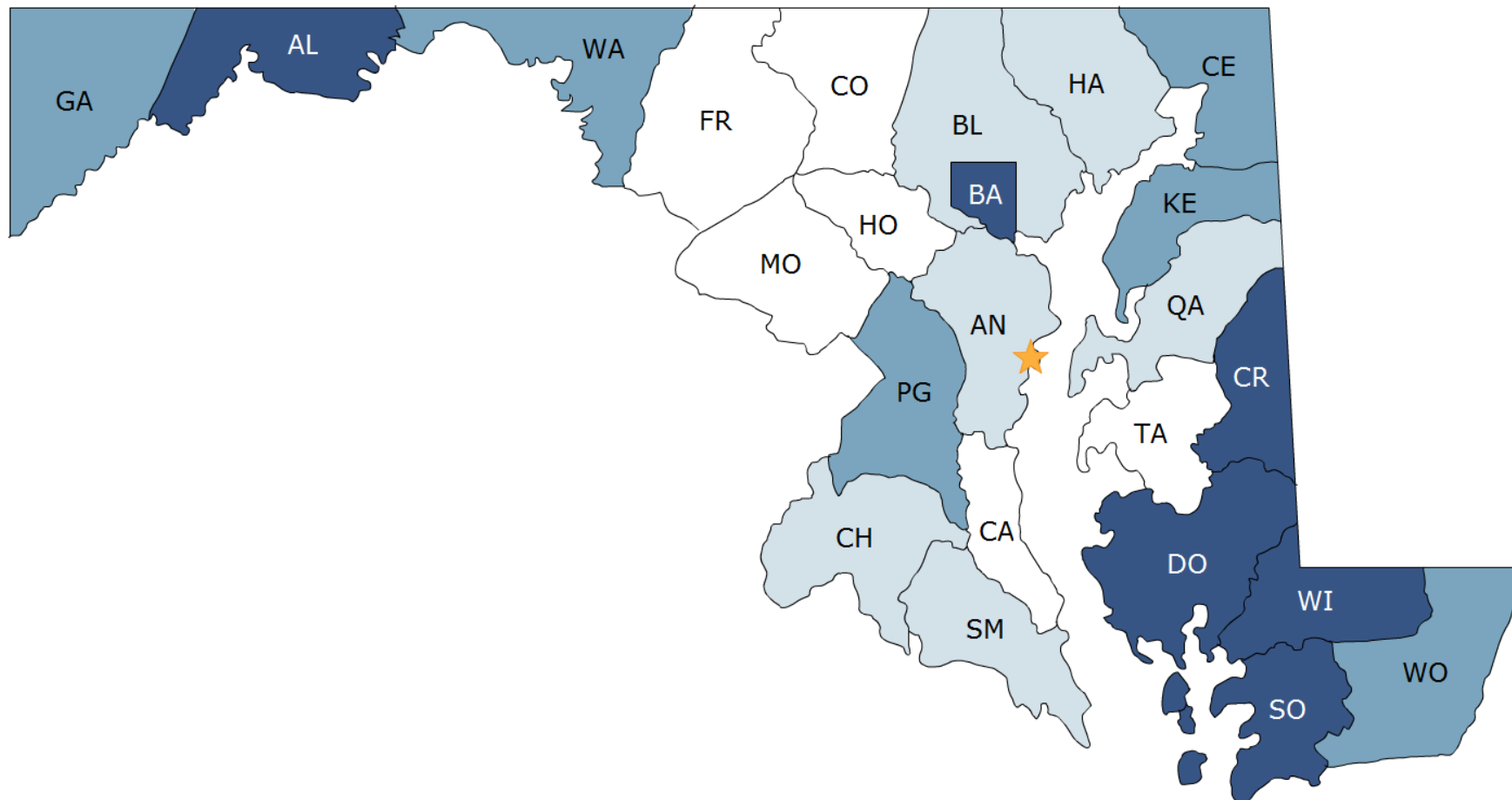


2013 Health Outcomes - Maryland





2013 Health Factors - Maryland



Rank 1-6 Rank 7-12 Rank 13-18 Rank 19-24





Prince George's (PG)

County Snapshot

Additional Measures

[BACK TO MAP](#)

Areas to Explore On Off

	Prince George's County	Error Margin	Maryland	National Benchmark*	Trend	Rank (of 24)
Health Outcomes						16
Mortality						18
Premature death	7,720	7,514-7,925	6,865	5,317		
Morbidity						13
Poor or fair health	12%	11-14%	13%	10%		
Poor physical health days	2.8	2.6-3.1	3.1	2.6		
Poor mental health days	2.9	2.7-3.2	3.2	2.3		
Low birthweight	10.4%	10.2-10.6%	9.2%	6.0%		
Health Factors						17
Health Behaviors						9
Adult smoking	15%	13-16%	16%	13%		
Adult obesity	34%	32-36%	28%	25%		
Physical inactivity	25%	23-26%	24%	21%		
Excessive drinking	10%	9-11%	15%	7%		
Motor vehicle crash death rate	13	12-14	11	10		
Sexually transmitted infections	682		454	92		
Teen birth rate	36	35-37	32	21		



	Prince George's County	Error Margin	Maryland	National Benchmark*	Trend	Rank (of 24)
Clinical Care						20
Uninsured	17%	16-18%	13%	11%		
Primary care physicians**	1,837:1		1,153:1	1,067:1		
Dentists**	1,936:1		1,587:1	1,516:1		
Preventable hospital stays	54	53-56	63	47		
Diabetic screening	80%	79-82%	84%	90%		
Mammography screening	63%	61-65%	68%	73%		
Social & Economic Factors						17
High school graduation**	75%		83%			
Some college	59%	58-60%	67%	70%		
Unemployment	7.0%		7.0%	5.0%		
Children in poverty	12%	10-15%	14%	14%		
Inadequate social support	23%	21-25%	20%	14%		
Children in single-parent households	43%	41-45%	33%	20%		
Violent crime rate	804		588	66		
Physical Environment						21
Daily fine particulate matter	12.4	12.2-12.6	12.5	8.8		
Drinking water safety	0%		0%	0%		
Access to recreational facilities	7		11	16		
Limited access to healthy foods**	4%		3%	1%		
Fast food restaurants	72%		60%	27%		