



women's policy, inc.

CONGRESSIONAL GALA 2016



WEDNESDAY
FEBRUARY 24 • 2016

Hyatt Regency Washington
on Capitol Hill
Washington, DC



The **Congressional Caucus for Women's Issues** was founded on April 19, 1977, by a small, bipartisan group of Congresswomen who gathered in a room in the U.S. Capitol to discuss the problem of spousal abuse. In the years that followed, the ever-increasing numbers of women elected to Congress have continued to meet to discuss and act on a wide range of issues affecting women and their families. The bipartisan spirit and cooperation reflected in the Caucus leadership continues today.

Congressional Caucus for Women's Issues

Co-Chairs

Reps. Kristi Noem and Doris Matsui

Vice-Chairs

Reps. Susan W. Brooks and Lois Frankel

Congressional Women Retiring from Public Service

Senate

Sen. Barbara Boxer

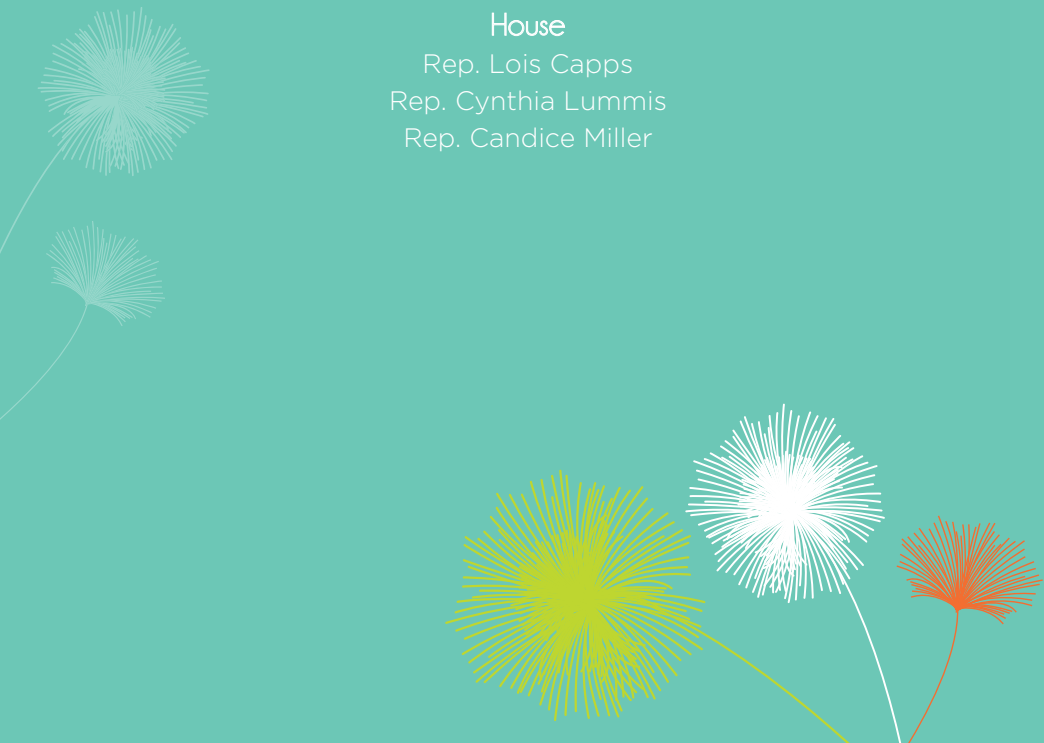
Sen. Barbara A. Mikulski

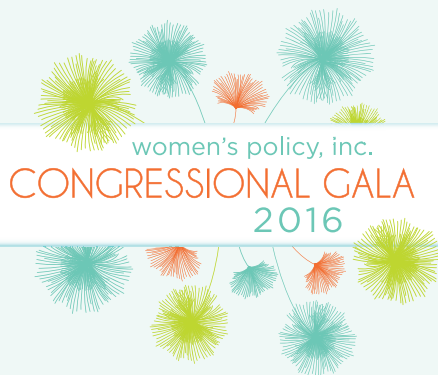
House

Rep. Lois Capps

Rep. Cynthia Lummis

Rep. Candice Miller





women's policy, inc.
CONGRESSIONAL GALA
2016

WELCOME

LORRAINE COLE

Board Chair
Women's Policy, Inc.

CINDY HALL

President
Women's Policy, Inc.

CELEBRATING THE IMPACT OF WOMEN IN THE 114TH CONGRESS AND
WOMEN MEMBERS OF CONGRESS RETIRING FROM PUBLIC SERVICE

REPS. KRISTI NOEM and DORIS MATSUI

Co-Chairs
Congressional Caucus for Women's Issues

REP. CATHY MCMORRIS RODGERS

Republican Conference Chair
Co-Chair, Congressional Caucus for Women's Issues, 110th Congress

REP. GWEN MOORE

Co-Chair, Congressional Caucus for Women's Issues, 112th Congress

Honorees

REP. LOIS CAPPES

Co-Chair, Congressional Caucus for Women's Issues, 110th Congress

REP. CYNTHIA LUMMIS

Co-Chair, Congressional Caucus for Women's Issues, 112th Congress

Wednesday, February 24, 2016
Hyatt Regency Washington on Capitol Hill
Washington, DC

Speakers

Republican Conference Chair Cathy McMorris Rodgers

As Chair of the House Republican Conference, Rep. Cathy McMorris Rodgers is the fourth highest-ranking Republican in the House and the highest ranking Republican woman in Congress. She is serving her sixth term representing the 5th District of Washington, and serves on the Energy and Commerce Committee. Rep. McMorris Rodgers has been a champion of the disabilities community, and the military and their families. She co-chaired the Women's Caucus in the 110th Congress and previously founded and co-chaired the Afghan Women's Task Force.

CO-CHAIRS, CONGRESSIONAL CAUCUS FOR WOMEN'S ISSUES

Rep. Kristi Noem

Rep. Kristi Noem is serving her third term as South Dakota's sole Representative in the House. She serves on the Ways and Means Committee and has been a leading voice on tax reform, trade, agriculture, and human trafficking prevention.

Rep. Doris Matsui

Rep. Doris Matsui is serving her sixth term in Congress. She represents the 6th District of California and serves on the Energy and Commerce Committee. She has championed health care, clean energy, and technology issues.

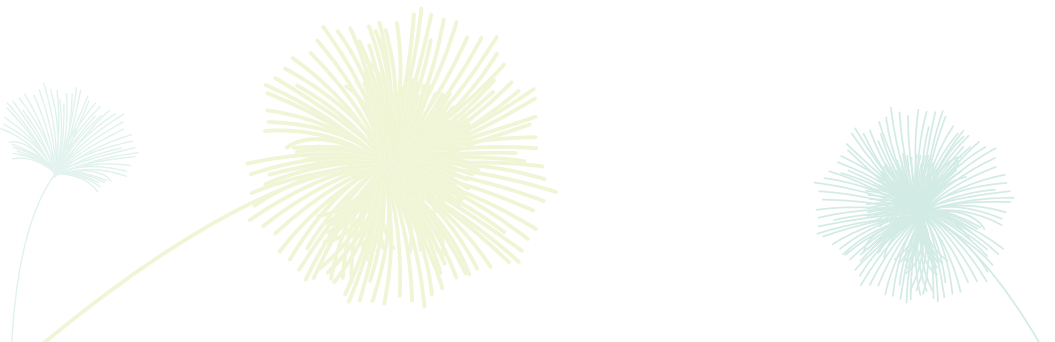
VICE-CHAIRS, CONGRESSIONAL CAUCUS FOR WOMEN'S ISSUES

Rep. Susan W. Brooks

Rep. Susan Brooks is serving her second term in Congress. She represents the 5th District of Indiana and serves on the Energy and Commerce Committee, Ethics Committee, and Select Committee on Benghazi. Through her membership on the Energy and Commerce Committee, she is working on mental health, substance abuse, biodefense, and Medicaid reform.

Rep. Lois Frankel

Rep. Lois Frankel is serving her second term in Congress representing the 22nd District of Florida. She serves on Transportation and Infrastructure and Foreign Affairs Committees. She has championed seniors, families, and veterans issues.



FORMER CO-CHAIR, WOMEN'S CAUCUS

Rep. Gwen Moore

Rep. Gwen Moore is serving her sixth term representing the 4th District of Wisconsin. She serves on the Financial Services and Budget Committees. Rep. Moore has championed protections and services for battered women and efforts to overhaul our nation's welfare system. Rep. Moore served as co-chair of the Women's Caucus in the 112th Congress.

HONOREES, FORMER CO-CHAIRS, WOMEN'S CAUCUS

Rep. Lois Capps

Rep. Lois Capps is serving her ninth full term representing the 24th District of California. She is a senior member of the Energy and Commerce Committee and serves on the Natural Resources Committee, and has been a leader on health, environment, energy, and education issues. Rep. Capps co-chaired the Women's Caucus in the 110th Congress and is a longtime co-chair of the Women's Health Task Force.

Rep. Cynthia Lummis

Rep. Cynthia Lummis is serving her fourth term representing Wyoming-At-Large. She serves on the Natural Resources and Oversight and Government Reform Committees. Taxation issues and protecting natural resources are among her top priorities in Congress. Rep. Lummis served as co-chair of the Women's Caucus in the 112th Congress.



Honorary Dinner Co-Chairs

Reps. Kristi Noem and Doris Matsui



Honorary Congressional Host Committee

Rep. Alma S. Adams
Sen. Kelly A. Ayotte
Sen. Tammy Baldwin
Rep. Karen Bass
Rep. Joyce Beatty
Rep. Jaime Herrera Beutler
Rep. Diane Black
Rep. Marsha Blackburn
Rep. Suzanne Bonamici
Del. Madeleine Z. Bordallo
Sen. Barbara Boxer
Rep. Susan W. Brooks
Rep. Corrine Brown
Rep. Julia Brownley
Rep. Cheri Bustos
Sen. Maria Cantwell
Sen. Shelley Moore Capito
Rep. Lois Capps
Rep. Kathy Castor
Rep. Judy Chu
Rep. Katherine Clark
Rep. Yvette D. Clarke
Rep. Bonnie Watson Coleman
Sen. Susan Collins
Rep. Barbara Comstock
Rep. Susan A. Davis
Rep. Diana DeGette
Rep. Rosa DeLauro
Rep. Suzan DelBene
Rep. Debbie Dingell
Rep. Tammy Duckworth
Rep. Donna F. Edwards

Rep. Renee Ellmers
Sen. Joni Ernst
Rep. Anna G. Eshoo
Rep. Elizabeth Esty
Sen. Dianne Feinstein
Sen. Deb Fischer
Rep. Virginia Foxx
Rep. Lois Frankel
Rep. Marcia L. Fudge
Rep. Tulsi Gabbard
Sen. Kirsten E. Gillibrand
Rep. Kay Granger
Rep. Michelle Lujan Grisham
Sen. Heidi Heitkamp
Sen. Mazie Hirono
Rep. Lynn Jenkins
Rep. Eddie Bernice Johnson
Rep. Marcy Kaptur
Rep. Robin L. Kelly
Sen. Amy Klobuchar
Rep. Ann McLane Kuster
Rep. Brenda Lawrence
Rep. Barbara Lee
Rep. Sheila Jackson Lee
Rep. Zoe Lofgren
Rep. Nita M. Lowey
Rep. Cynthia Lummis
Rep. Carolyn B. Maloney
Rep. Betty McCollum
Rep. Martha McSally
Rep. Grace Meng
Sen. Barbara A. Mikulski

Rep. Gwen Moore
Sen. Lisa Murkowski
Sen. Patty Murray
Rep. Grace F. Napolitano
Del. Eleanor Holmes Norton
Rep. Nancy Pelosi, Democratic Leader
Rep. Chellie Pingree
Del. Stacey Plaskett
Del. Aumua Amata Coleman Radewagen
Rep. Kathleen Rice
Rep. Cathy McMorris Rodgers
Rep. Ileana Ros-Lehtinen
Rep. Lucille Roybal-Allard
Rep. Linda T. Sánchez
Rep. Loretta Sanchez
Rep. Jan Schakowsky
Rep. Debbie Wasserman Schultz
Rep. Terri Sewell
Sen. Jeanne Shaheen
Rep. Kyrsten Sinema
Rep. Louise M. Slaughter
Rep. Jackie Speier
Sen. Debbie Stabenow
Rep. Elise Stefanik
Rep. Dina Titus
Rep. Norma Torres
Rep. Niki Tsongas
Rep. Jackie Walorski
Rep. Mimi Walters
Sen. Elizabeth Warren
Rep. Maxine Waters
Rep. Frederica S. Wilson

Dinner Host Committee Chairs

Catherine Ferguson
Scientific Technologies Corporation

Kori Blalock Keller
National Association of Letter Carriers, AFL-CIO

Anna Schneider
Volkswagen Group of America, Inc.

Julia-Feliz Sessoms
Intel Corporation

Dinner Host Committee

Bevin Albertani
Joseph Auci
Andy Blocker
Bill Blumenthal
Tami Jackson Buckner
Claudia Carravetta
Meg Eckenroad
Arielle Elliott
Kate Sullivan Hare

Nikki Heidepriem
Amy Overton Hunt
Darrel Jodrey
Charlie Johnson
Christopher Leahy
Nancy LeaMond
Mimi Mager
Debbie Marshall
Janet McUlisky

Daphne Moore
Amb. Connie Morella
Alexis Marks Mosher
Catlin O'Neill
Amy Plaster
Mary-Lacey Reuther
Patricia Schroeder
Kenny Thompson



Benefactors

AbbVie
Apple
Bayer Corporation
Democracy Fund
Pfizer Inc
Volkswagen Group of America, Inc.

Patrons

Intuit
Johnson & Johnson
TherapeuticsMD

Sponsors

| | |
|------------------------------------|--|
| AARP | Facebook |
| Akin Gump Strauss Hauer & Feld LLP | Hologic, Inc. |
| Astellas US | International Association of Fire Fighters |
| Bloomberg Government | PepsiCo |
| Chevron | State Farm |
| CMS Energy | Walton Family Foundation |

Contributors

| | |
|--|--|
| Abbott | International Brotherhood of Electrical Workers |
| AirXpanders | MassMutual Financial Group |
| American Postal Workers Union, AFL-CIO | National Association of Letter Carriers, AFL-CIO |
| Bill & Melinda Gates Foundation | National Rural Letter Carriers Association |
| Bridgestone Americas Trust Fund | Securities Industry and Financial Markets Association |
| Communications Workers of America | SEIU |
| Intel Corporation | Texas Instruments |
| International Association of Machinists and Aerospace Workers | |

Friends

| | |
|---|--|
| Amalgamated Transit Union (ATU) | National Postal Mail Handlers Union |
| American Heart Association | Nikki Heidepriem |
| American Maritime Congress | Pacific Gas and Electric Company |
| International Union of Bricklayers & Allied Craftworkers | Personal Care Products Council |
| Investment Company Institute | Susan G. Komen |
| Jhplego | The National Campaign to Prevent Teen & Unplanned Pregnancy |
| Karen Judd Lewis | Truth Initiative |
| Kering Americas, Inc. | United Association of Plumbers and Pipefitters |
| National Air Traffic Controllers Association | United Mine Workers of America |

Women's Policy, Inc.

BOARD OF DIRECTORS

Lorraine Cole, Ph.D.

Chair

Andy Blocker

Vice-Chair

Peggy Nagae

Secretary/Treasurer

Bevin Albertani

Amy Overton Hunt

Amb. Connie Morella

Ex officio

Cindy Hall

Honorary

Rep. Nita M. Lowey

Rep. Doris Matsui

Rep. Kristi Noem

Emeritus

Alice Borrelli

Ann Costello, Esq.

Nikki Heidepriem, Esq.

Karen Judd Lewis, Esq.

Kate Eby Moore

Angela Oh, Esq.

Amy Plaster

Elizabeth H. Shuler

Beatriz Olvera Stotzer

Lorraine Thelian

Susan Wood, Ph.D.

Women's Policy, Inc. (WPI) is a nonprofit, nonpartisan public policy organization whose mission is to bring women policymakers together to work across party lines on issues of importance to women and their families.

Women's Policy, Inc.

409 12th Street, SW, Suite 600

Washington, DC 20024

T 202.554.2323 | F 202.554.2346

www.womenspolicy.org



Find us on Facebook



Follow us on Twitter
@WomensPolicyInc
#WPIGold

