A large, stylized '75th' is rendered in a light blue-grey color, with the '7' and '5' being significantly larger than the 'th'. A vibrant, multi-colored floral wreath, featuring leaves and flowers in shades of yellow, orange, pink, purple, teal, and lime green, curves around the bottom and right sides of the '75th' text. The background is a solid dark blue.

Anniversary *of*
the Congressional
Caucus *for*
Women's Issues

WOMEN'S POLICY, INC.
CONGRESSIONAL
GALA 2012

Wednesday, March 7, 2012
Union Station, East Hall, Washington, DC



Congressional Caucus for Women's Issues

Co-Chairs

Reps. Cynthia Lummis and Gwen Moore

Vice-Chairs

Reps. Jaime Herrera Beutler and Debbie Wasserman Schultz

Task Force Co-Chairs

Women's Health

Reps. Shelley Moore Capito and Lois Capps

Women and the Economy/Business

Reps. Jaime Herrera Beutler and Chellie Pingree

Violence Against Women

Reps. Jean Schmidt and Loretta Sanchez

International Women's Issues

Reps. Judy Biggert and Jan Schakowsky

Afghan Women

Reps. Cathy McMorris Rodgers and Donna Edwards

Trafficking

Reps. Ann Marie Buerkle and Carolyn Maloney

Women in the Military/Veterans

Reps. Kay Granger and Susan Davis

Young Women

Reps. Renee Ellmers and Tammy Baldwin

Women of Color

Rep. Sheila Jackson Lee

Education

Rep. Judy Chu

The Congressional Caucus for Women's Issues was founded on April 19, 1977, by a small, bipartisan group of Congresswomen who gathered in a room in the U.S. Capitol to discuss the problem of spousal abuse. In the years that followed, the ever-increasing numbers of women elected to Congress have continued to meet to discuss and act on a wide range of issues affecting women and their families. The bipartisan spirit and cooperation reflected in the Caucus leadership continues today.

The women Members who have co-chaired the Caucus are:

Reps. Elizabeth Holtzman (D-NY) and Margaret Heckler (R-MA), 1977-1980

Reps. Patricia Schroeder (D-CO) and Margaret Heckler (R-MA), 1980-1982

Reps. Patricia Schroeder (D-CO) and Olympia J. Snowe (R-ME), 1983-1994

Reps. Connie Morella (R-MD) and Nita M. Lowey (D-NY), 1995-1996

Reps. Nancy Johnson (R-CT) and Eleanor Holmes Norton (D-DC), 1997-1998

Reps. Sue W. Kelly (R-NY) and Carolyn B. Maloney (D-NY), 1999-2000

Reps. Judy Biggert (R-IL) and Juanita Millender-McDonald (D-CA), 2001-2002

Reps. Shelley Moore Capito (R-WV) and Louise Slaughter (D-NY), 2003-2004

Reps. Ginny Brown-Waite (R-FL) and Hilda Solis (D-CA), 2005-2006

Reps. Lois Capps (D-CA) and Cathy McMorris Rodgers (R-WA), 2007-2008

Reps. Jan Schakowsky (D-IL) and Mary Fallin (R-OK), 2009-2010

Reps. Cynthia Lummis (R-WY) and Gwen Moore (D-WI), 2011-2012



CONGRESSIONAL GALA 2012

*Celebrating the Congressional Caucus for Women's Issues on the
occasion of its Thirty Fifth Anniversary*

Welcome

Amy Plaster
Board Chair

Women's Policy, Inc.

Cindy Hall
President

Women's Policy, Inc.

Women's Caucus Legislative Priorities for the Second Session

Reps. Cynthia Lummis and Gwen Moore

Co-Chairs, Congressional Caucus for Women's Issues

*Introducing Past and Current Members of the Congressional
Caucus for Women's Issues*

Current and Former Women Members of Congress

Tribute to former Rep. Gabrielle Giffords

Rep. Debbie Wasserman Schultz

Vice-Chair, Congressional Caucus for Women's Issues

Celebrating the Past 35 Years of Progress for Women

Former Co-Chairs, Congressional Caucus for Women's Issues

Closing Remarks

Democratic Leader Nancy Pelosi

Wednesday, March 7, 2012

Union Station, East Hall, Washington, DC

SPEAKERS

Democratic Leader Nancy Pelosi

Nancy Pelosi is the Democratic Leader of the House of Representatives in the 112th Congress. From 2007 to 2011, she served as the first woman Speaker of the House and is also the first woman in American history to lead a major political party in Congress, having served as House Democratic Leader from 2003 to 2007. Leader Pelosi has represented San Francisco, California's Eighth District, for 25 years.

CO-CHAIRS, CONGRESSIONAL CAUCUS FOR WOMEN'S ISSUES

Rep. Cynthia Lummis

Rep. Cynthia Lummis is serving her second term representing Wyoming-At-Large. She serves on the Appropriations Committee. Taxation issues and protecting natural resources are among her top priorities in Congress.

Rep. Gwen Moore

Rep. Gwen Moore is serving her fourth term representing the 4th District of Wisconsin. She serves on the Financial Services and Budget Committees. Rep. Moore has championed protections and services for battered women and efforts to overhaul our nation's welfare system.

VICE-CHAIRS, CONGRESSIONAL CAUCUS FOR WOMEN'S ISSUES

Rep. Jaime Herrera Beutler

Rep. Jaime Herrera Beutler is serving her first term representing the 3rd District of Washington. She is vice-chair of the Transportation and Infrastructure Subcommittee on Water Resources and Environment, and serves on the Small Business Committee. Rep. Herrera Beutler has advocated for affordable health care and tax relief, and co-chairs the Women and the Economy/Business Task Force.

Rep. Debbie Wasserman Schultz

Rep. Debbie Wasserman Schultz is serving her fourth term representing the 20th District of Florida. She serves on the Budget Committee. Rep. Wasserman Schultz is Vice Chair of the House Democratic Steering and Policy Committee and serves as Chief Deputy Whip. She has been a leader on women's health and child protection issues.

FORMER CO-CHAIRS, CONGRESSIONAL CAUCUS FOR WOMEN'S ISSUES

Rep. Judy Biggert

In her seventh term representing Illinois' 13th District, Rep. Judy Biggert chairs the Financial Services Subcommittee on Insurance, Housing and Community Opportunity. She also serves on the Education and the Workforce, and Science, Space, and Technology Committees. A co-chair of the Women's Caucus in the 107th Congress, she has championed women's health and financial literacy. She currently co-chairs the International Women's Issues Task Force.

Rep. Shelley Moore Capito

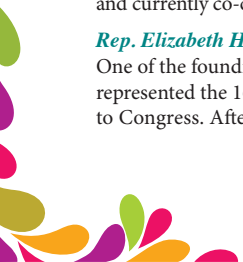
In her sixth term representing West Virginia's 2nd District, Rep. Shelley Moore Capito chairs the Financial Services Subcommittee on Financial Institutions and Consumer Credit, and serves on the Transportation and Infrastructure Committee. A strong advocate for women's health and seniors, Rep. Capito co-chaired the Women's Caucus during the 108th Congress and currently co-chairs the Women's Health Task Force.

Rep. Lois Capps

Rep. Lois Capps is serving her eighth term representing the 23rd District of California. She is a senior member of the Energy and Commerce Committee, and has been a leader on women's health and education issues. Rep. Capps co-chaired the Women's Caucus in the 110th Congress and currently co-chairs the Women's Health Task Force.

Rep. Elizabeth Holtzman

One of the founding co-chairs of the Congressional Caucus for Women's Issues, Elizabeth Holtzman represented the 16th District of New York from 1973-1981; she is the youngest woman ever elected to Congress. After leaving Congress, she taught at NYU Law School, was elected district attorney



of Brooklyn and later New York City Comptroller, and then returned to private practice. During her congressional service, Ms. Holtzman fought for the ratification of the Equal Rights Amendment and against sex discrimination in federal programs.

Rep. Nancy L. Johnson

Former Rep. Nancy Johnson represented the 5th District of Connecticut from 1983-2007. While in Congress, she served as chair of three Ways and Means Subcommittees: Oversight, Human Resources, and Health; she also chaired the Committee on Standards of Official Conduct. A champion for health care and taxation issues, Ms. Johnson entered private practice after leaving Congress. She co-chaired the Women's Caucus in the 105th Congress.

Rep. Nita M. Lowey

Rep. Nita Lowey is serving her twelfth term representing the 18th District of New York. She serves on the Appropriations Committee, where she is Ranking Member of the State, Foreign Operations, and Related Programs Subcommittee. A leader on education and women's issues, Rep. Lowey is one of the founding board members of Women's Policy, Inc. She served as co-chair of the Women's Caucus in the 104th Congress.

Rep. Carolyn B. Maloney

Currently in her tenth term, Rep. Carolyn Maloney represents the 14th District of New York. She is Ranking Member of the Financial Services Subcommittee on Financial Institutions and Consumer Credit. She also serves on the Oversight and Government Reform and Joint Economic Committees. A champion for women and families, Rep. Maloney was a co-chair of the Women's Caucus in the 106th Congress and currently co-chairs the Trafficking Task Force.

Amb. Connie Morella

Amb. Connie Morella represented the 8th District of Maryland from 1987-2003. While in Congress, she chaired the Technology Subcommittee of the Science Committee, and the Oversight and Government Reform Subcommittee on the District of Columbia. After leaving Congress, she was appointed U.S. Ambassador to the Organization for Economic Cooperation and Development and taught at American University. A champion for women and families, Amb. Morella is one of the founding board members of Women's Policy, Inc.; she served as co-chair of the Women's Caucus in the 104th Congress.

Del. Eleanor Holmes Norton

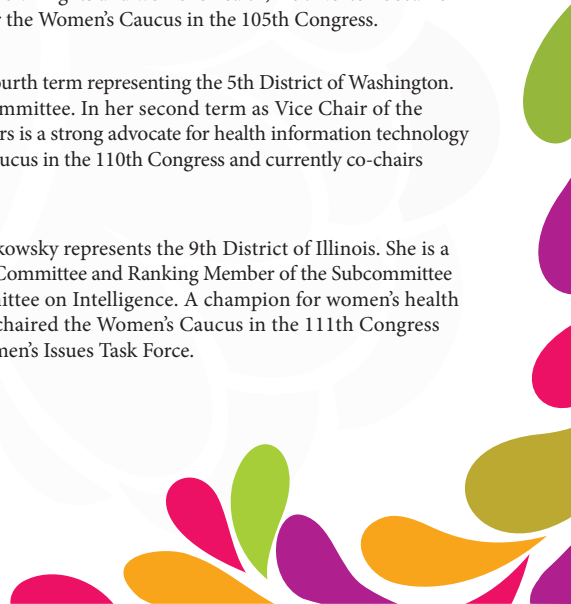
Del. Eleanor Holmes Norton is serving her eleventh term representing the District of Columbia. She is the Ranking Member of the Transportation and Infrastructure Subcommittee on Economic Development, Public Buildings, and Emergency Management. She also serves on the Oversight and Government Reform Committee. A leader on civil rights and women's health, Del. Norton became the first African American woman to co-chair the Women's Caucus in the 105th Congress.

Rep. Cathy McMorris Rodgers

Rep. Cathy McMorris Rodgers is serving her fourth term representing the 5th District of Washington. She serves on the Energy and Commerce Committee. In her second term as Vice Chair of the Republican Conference, Rep. McMorris Rodgers is a strong advocate for health information technology and education. She co-chaired the Women's Caucus in the 110th Congress and currently co-chairs the Afghan Women's Task Force.

Rep. Jan Schakowsky

Currently in her seventh term, Rep. Jan Schakowsky represents the 9th District of Illinois. She is a senior member of the Energy and Commerce Committee and Ranking Member of the Subcommittee on Oversight of the Permanent Select Committee on Intelligence. A champion for women's health and ending violence against women, she co-chaired the Women's Caucus in the 111th Congress and currently co-chairs the International Women's Issues Task Force.



Honorary Dinner Co-Chairs

Reps. Cynthia Lummis and Gwen Moore

Honorary Congressional Host Committee

Rep. Tammy Baldwin
Rep. Karen R. Bass
Rep. Shelley Berkley
Rep. Jaime Herrera Beutler
Rep. Judy Biggert
Rep. Diane Black
Rep. Marsha Blackburn
Rep. Lindy Boggs*
Del. Madeleine Z. Bordallo
Sen. Barbara Boxer
Sen. Carol Moseley Braun*
Rep. Corrine Brown
Rep. Ginny Brown-Waite*
Rep. Ann Marie Buerkle
Sen. Maria Cantwell
Rep. Shelley Moore Capito
Rep. Lois Capps
Rep. Kathy Castor
Del. Donna M. Christensen
Rep. Judy Chu
Rep. Yvette D. Clarke
Sen. Susan Collins
Rep. Kathy Dahlkemper*
Rep. Susan Davis
Rep. Diana DeGette
Rep. Rosa DeLauro
Rep. Donna F. Edwards
Rep. Renee Ellmers
Rep. Jo Ann Emerson
Rep. Anna G. Eshoo
Gov. Mary Fallin*
Rep. Marcia L. Fudge
Sen. Kirsten E. Gillibrand
Rep. Kay Granger
Sen. Kay R. Hagan

Rep. Janice Hahn
Rep. Nan Hayworth
Rep. Mazie K. Hirono
Rep. Kathleen Hochul
Rep. Elizabeth Holtzman*
Rep. Darlene Hooley*
Sen. Kay Bailey Hutchison
Rep. Lynn Jenkins
Rep. Eddie Bernice Johnson
Rep. Nancy L. Johnson*
Rep. Marcy Kaptur
Rep. Barbara B. Kennelly*
Rep. Mary Jo Kilroy*
Rep. Ann Kirkpatrick*
Sen. Amy Klobuchar
Sen. Mary Landrieu
Rep. Barbara Lee
Rep. Sheila Jackson Lee
Rep. Zoe Lofgren
Rep. Nita M. Lowey
Rep. Mary Bono Mack
Rep. Carolyn B. Maloney
Rep. Marjorie Margolies-Mezvinsky*
Rep. Doris O. Matsui
Rep. Carolyn McCarthy
Sen. Claire McCaskill
Rep. Betty McCollum
Sen. Barbara A. Mikulski
Rep. Candice S. Miller
Amb. Connie Morella*
Sen. Lisa Murkowski
Sen. Patty Murray
Rep. Sue Myrick
Rep. Grace F. Napolitano
Rep. Kristi Noem

Del. Eleanor Holmes Norton
Rep. Mary Rose Oaker*
Rep. Liz J. Patterson*
Rep. Nancy Pelosi, Democratic Leader
Rep. Chellie Pingree
Rep. Deborah Pryce*
Rep. Laura Richardson
Rep. Martha Roby
Rep. Cathy McMorris Rodgers
Rep. Ileana Ros-Lehtinen
Rep. Lucille Roybal-Allard
Rep. Linda T. Sánchez
Rep. Loretta Sanchez
Rep. Jan Schakowsky
Rep. Lynn Schenk*
Rep. Jean Schmidt
Rep. Claudine Schneider*
Rep. Patricia Schroeder*
Rep. Debbie Wasserman Schultz
Rep. Allyson Y. Schwartz
Rep. Terri Sewell
Sen. Jeanne Shaheen
Rep. Louise M. Slaughter
Sen. Olympia Snowe
Rep. Jackie Speier
Sen. Debbie Stabenow
Rep. Betty Sutton
Rep. Jill Long Thompson*
Rep. Karen Thurman*
Rep. Niki Tsongas
Rep. Nydia Velázquez
Rep. Maxine Waters
Rep. Frederica Wilson
Rep. Lynn Woolsey

*Former Senator or Member of Congress

Dinner Host Committee Chairs

Amy Hawkins
BNSF Railway
Janet McUlusky
Pfizer Inc

Myke Reid
**American Postal
Workers Union,
AFL-CIO**

Melissa Shannon
Kountoupes Consulting
Heather Wingate
Nomura Holding America

Dinner Host Committee

Judith Blanchard
Andy Blocker
Alice Borrelli
Danielle Carrig
Ann Costello
Larry Duncan
Vivian Fernandez
Nikki Heidepriem
P.J. Honerkamp

Darrel Jodrey
Karen Judd Lewis
Thomas B. Lilburn
Eugene A. Ludwig
Mimi Mager
Rebecca Mandell
Amb. Connie Morella
Cathy Nyce
Dean T. Pappas

Amy Plaster
Anna Schneider
Patricia Schroeder
Elizabeth H. Shuler
Bea Olvera Stotzer
Lorraine Thelian
Candi Wolff



CONGRESSIONAL GALA 2012

2012 Congressional Gala made possible through the generous support of

PATRONS

Bayer HealthCare LLC

BNSF Railway

Johnson & Johnson

Nomura Holding America

Pfizer Inc

SPONSORS

Allstate Insurance Company

American Postal Workers
Union, AFL-CIO

Amgen

BNY Mellon

Chevron

Citigroup

CMS Energy

Human Genome Sciences, Inc.

Intel Corporation

Jazz Pharmaceuticals

Lifetime Television

Lockheed Martin

Promontory Financial Group, LLC.

State Farm

UBS Americas Inc.

Volkswagen Group of America, Inc.

CONTRIBUTORS

AARP

Best Buy

Bridgestone Americas Trust Fund

Elmendorf/Ryan Strategies

Hologic, Inc.

Legacy

Qualcomm

United Technologies

Washington Council Ernst & Young

DONORS

AdvaMed (Advanced Medical Technology Association)

American Federation of State, County and Municipal
Employees (AFSCME)

Amway

Boehringer Ingelheim

Kraft Foods

McAllister & Quinn

Personal Care Products Council

PG&E Corporation

Public Strategies Washington, Inc.

Securities Industry and Financial
Markets Association

Southwest Airlines Co.

The Cypress Group

The Financial Services Roundtable

The Rich Feuer Group, LLC

TOYOTA

FRIENDS

Abbott

AFL-CIO

American Federation of Teachers, AFL-CIO

Investment Company Institute

Jhpiego

Microsoft Corporation


National Association of Social Workers

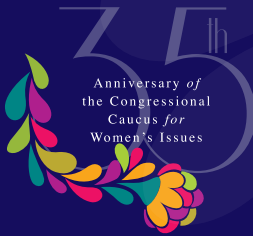
National Family Planning &
Reproductive Health Association

National Postal Mail Handlers Union

Nikki Heidepriem

O'Hara Federal Strategies, LLC





WOMEN'S POLICY, INC.

Board of Directors

Amy Plaster
Chair

Lorraine Cole, Ph.D.
Vice-Chair

Andy Blocker
Secretary/Treasurer

Alice Borrelli
Ann Costello, Esq.
Karen Judd Lewis, Esq.
Amb. Connie Morella
Elizabeth H. Shuler
Beatriz Olvera Stotzer
Ex Officio
Cindy Hall

Honorary
Sen. Olympia J. Snowe
Rep. Nita M. Lowey
Rep. Cynthia Lummis
Rep. Gwen Moore

Emeritus
Nikki Heidepriem, Esq.
Kate Eby Moore
Angela Oh, Esq.
Lorraine Thelian
Susan Wood, Ph.D.

Women's Policy, Inc. (WPI) is a nonprofit, nonpartisan public policy organization that champions the interests of women throughout the country on the most significant social, economic, and health issues across the public policy spectrum. The organization's sole focus is to help ensure that the most informed decisions on key women's issues are made by policymakers.

Special thanks to the Women's Research and Education Institute for their photographic collection of the early days of the Congressional Caucus for Women's Issues, and to Doug DeMark for the use of his photographs taken at WPI galas over the years.

Women's Policy, Inc.
409 12th Street, SW, Suite 310
Washington, DC 20024
202.554.2323
Fax 202.554.2346
www.womenspolicy.org

